



OWNERS MANUAL

H20

H30

P20

P30



OWNERS MANUAL

Congratulations with your new Hegel product. These HEGEL Reference series amplifiers represent the absolute pinnacle of our technology.

Using real instruments as references we have used state-of-the-art technology to provide you with the ultimate cost vs. performance in these high end products.

The H20, H30, P20 or P30 products will give you the most NATURAL and DYNAMIC sound available today.

Bent Holter
President and Lead engineer

TABLE OF CONTENTS

General use	page	4
H20	page	4
H30	page	5
P20	page	6
P30	page	7
Mono/Stereo mode (H30)	page	8
RC8 remote control	page	9
Cleaning/Warning/Warranty	page	10
Technical Specifications	page	11

GENERAL USE H20

The amplifier is switched on with the button in the middle of the front panel. A blue light indicates it is switched on.

The amplifier has two types of audio inputs: unbalanced audio signal with phono plugs (RCA) and balanced audio signal with XLR plugs (pin 2 is positive phase, pin 3 is negative phase and pin 1 is chassis ground).

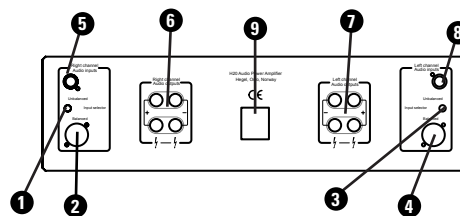
Selecting between balanced and unbalanced inputs:

Use the signal input selector (1,3) and point it in the direction of the input you want to use.

NOTE: Do not connect both balanced and unbalanced cables at the same time.

NOTE: We strongly recommend that the amplifier is turned off when you switch between the inputs, and while connecting cables. Not doing so may potentially harm your speakers.

After the amplifier is switched on, there is a delay of about 10-30 seconds before the speaker outputs are turned on.



H20 Back panel

- 1,3 : Signal input selector left/right
- 2,4 : Balanced XLR signal input right/left
- 5,8 : Unbalanced (phono/RCA) right/left
- 6,7 : Speaker outputs right/left
- 9 : Mains connector

GENERAL USE H30

The Hegel H30 is a mono-block amplifier that may be used as a stereo power amplifier. Read more about the mono / stereo connection on page 8.

The amplifier has two types of audio inputs: unbalanced audio signal with phono plugs (RCA) and balanced audio signal with XLR plugs (pin 2 is positive phase, pin 3 is negative phase and pin 1 is chassis ground). You can switch between the two inputs with the designated switches (fig. left. Number 6 and 12)

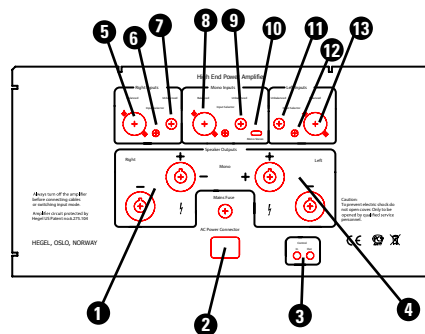
NOTE: Do not connect both balanced and unbalanced cables at the same time.

NOTE: We strongly recommend that the amplifier is turned off when you switch between the inputs, and while connecting cables. Not doing so may potentially harm your speakers.

TRIGGER INPUT/OUTPUT

The H30 has a trigger input and output. If connected, a steady 5-12V signal will turn the outputs on. When the signal is 0V signal the output will be turned off. The trigger output allows you to daisy chain more H30's or other devices. The trigger port uses a regular 3,5 mm jack plug.

The trigger port will function with most trigger outputs (5-12V) from other manufacturers, but is only guaranteed with HEGEL trigger outputs. Connecting a trigger port with output more than 12V may harm the amplifier and is not covered by the warranty



H30 Back panel

- 1,4 : Speaker outputs right/left
- Speaker outputs mono
- 2 : Mains connector
- 3 : Trigger input/output
- 5,13: Balanced XLR signal input right/left
- 7,11: Unbalanced (phono/RCA) right/left
- 8 : Balanced XLR signal input mono
- 9 : Unbalanced (phono/RCA) mono
- 10 : Mono/Stereo selector

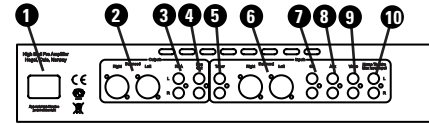
GENERAL USE P20

The amplifier is switched on with the button in the middle of the front panel. A blue light indicates it is switched on. To the left of the channel selector with selections: Balanced, CD, Video, Tuner, Auxiliary and Home Theatre, and to the right the volume control. The selected input is indicated by a blue light.

When the mute button on the Hegel Remote Control is pressed, the amplifier outputs are muted. Mute is indicated by a flashing blue power light. To go back to normal operation press the mute button one more time. After the amplifier is switched on, there is a delay of a few seconds while the volume control circuit is being calibrated.

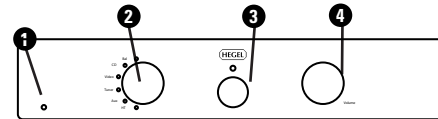
Avoid connecting input cables without making certain the unit is completely turned off. We also recommend that you reduce volume levels before changing inputs, as either may damage your loudspeakers.

WARNING: The Home Theatre input bypasses the volume control. Connecting a regular source to this input may potentially harm your system and your hearing.



P20 Back panel

- 1 : Mains connector
- 2 : Balanced XLR signal output right/left
- 3 : Unbalanced RCA signal outputs right/left
- 4 : Unbalanced RCA Rec signal output right/left
- 5 : Unbalanced RCA Tuner signal input right/left
- 6 : Balanced XLR signal inputs right/left
- 7-9 : Unbalanced RCA signal inputs right/left
- 10 : Home Theatre input (volume bypass)



P20 Front panel

- 1 : IR - remote control receiver
- 2 : Input selector knob
- 3 : Power on/off switch
- 4 : Volume attenuator

GENERAL USE P30

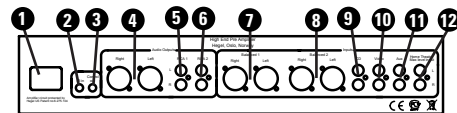
The P30 has two types of audio inputs: unbalanced audio signal with phono plugs (RCA) and balanced audio signal with XLR plugs (pin 2 is positive phase, pin 3 is negative phase and pin 1 is chassis ground).

After the amplifier is switched on, there is a delay of about 60 seconds while the volume control circuit is being calibrated. This is indicated by the flashing blue power LED. When the LED stops flashing and gives a steady blue signal, the P30 is ready to operate.

The amplifier is switched on with the button on the front panel. To the right you have the volume attenuator, and to the left the input selector knob.

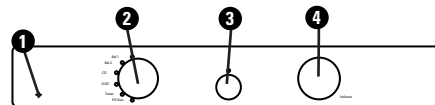
If you have a source with fully balanced outputs, we recommend you use high quality balanced cables to connect the source to the P30.

WARNING: The Home Theatre input bypasses the volume control. Connecting a regular source to this input may potentially harm your system and your hearing.



P30 Back panel

- 1 : Mains connector
- 2 : IR-direct input
- 3 : 12V trigger output
- 4 : Balanced XLR signal output right/left
- 5,6 : Unbalanced RCA signal outputs right/left
- 7,8 : Balanced XLR signal inputs right/left
- 9-11 : Unbalanced RCA signal inputs right/left
- 12 : Home Theatre input (volume bypass)



P30 Front panel

- 1 : IR - remote control receiver
- 2 : Input selector knob
- 3 : Power on/off switch
- 4 : Volume attenuator

SETTING UP THE H30 IN MONO MODE

The H30 is intended to be run as a mono block. As such it will drive virtually any speaker on the market.

To use the H30 as a mono block, connect each of the mono blocks as described in the figure "Mono mode" (upper right).

WARNING: The H30 is extremely powerful and it is important that you make the connections and flip the mono switch when the amplifier is turned completely off. Not only with the trigger switch.

We do recommend you use balanced (XLR) interconnect cables of good quality to obtain the best sound quality.

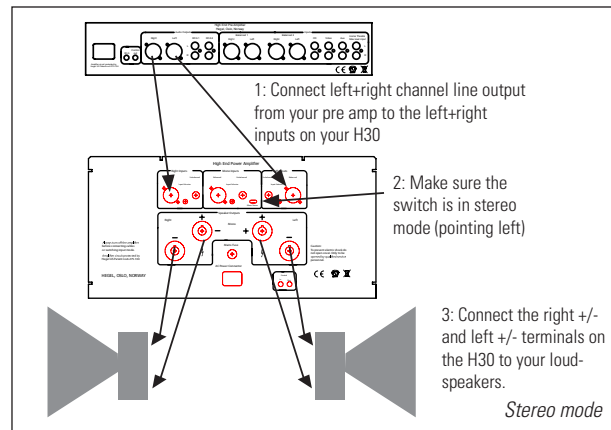
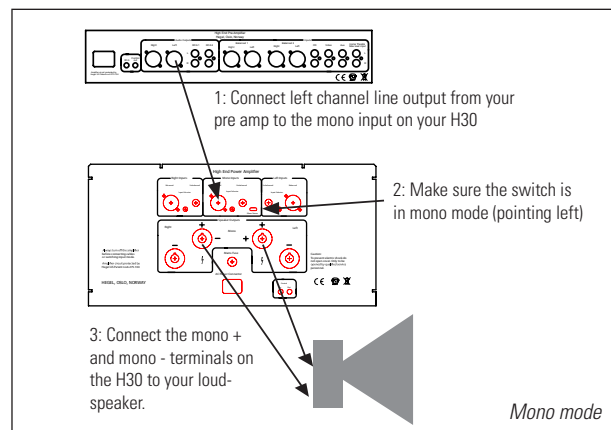
SETTING UP THE H30 IN STEREO MODE

The H30 may also be used as a stereo power amplifier, and will deliver in excess of 300 watts pr. channel in this configuration.

Hook it up as described in the figure "Stereo mode" (lower right)

WARNING: The H30 is extremely powerful and it is important that you make the connections and flip the stereo/mono switch when the amplifier is turned completely off. Not only with the trigger switch.

We do recommend you use balanced (XLR) interconnect cables of good quality to obtain the best sound quality.



RC8 REMOTE CONTROL

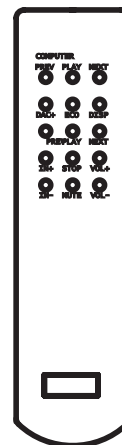
All HEGEL pre amplifiers can be controlled by the included HEGEL system remote control, RC8. Like with other HEGEL products, the number of buttons is kept to a minimum.

The input source is selected by pressing IN+ and IN-, the volume is adjusted by pressing VOL+ and VOL-. The Mute function toggles on and off by pressing the MUTE button. The HEGEL system remote control will also control other HEGEL products like CD-players and integrated amplifiers. When used with a P30 pre amplifier, pressing the ECO-button will set it in a low power mode.

The remote control is using 2 standard 1.5-volt LR03 AAA batteries. To insert the batteries please use a normal type cross head screwdriver to gently remove the four screws in the bottom of the remote control. Be careful and use a normal cross head screwdriver to remove the four Philips cross head screws.

Be sure to insert the batteries with the correct polarity with + sign and – sign as shown inside the battery holder, and be careful when inserting the batteries to not damage the battery holder.

Be careful when inserting the screws after fitting the batteries. Please turn the screws gently by hand first to avoid damaging the threads in the remote control body. Do not tighten the screws to hard, as this also can damage the screws and the soft metal body of the remote control. Please do not drop the remote control hard down in the floor, as this can damage internal parts of the remote control and the battery holder.



USE/PLACEMENT

The amplifier should be placed on a flat, hard surface for proper cooling. The amplifier performs best after being switched on for 1 hour for heating up. Plenty of space is required for air circulation above, below and around the amplifier. The amplifier must never be placed on a carpet or similar surface that obstructs air circulation through the component. Nor must it be covered while in use or placed on a narrow shelf or in another confined space.

Always use the main power switch on the front panel to switch the amplifier on and off. Never switch on or off the AC voltage supply to the H20 or H30 with an external switch.

The amplifier will automatically switch itself off if overheated (H20 and H30).

The amplifier will need some break-in time before maximum sound quality can be experienced.

CLEANING

The top, side and front panels are made of bead blasted and anodized aluminium. Fingerprints can be wiped with a damp cloth.

NOTE/WARNING

HEGEL products must never be opened by anyone other than certified technicians. The devices contain electronic components that can cause electric shock. Work performed on HEGEL products by unqualified persons can cause serious damage and personal injury. The products must not be exposed to rain or moisture.

WARRANTY

All HEGEL products come with a 2-year guarantee against defective materials and workmanship.



Power Amplifiers

HEGEL H20

Output power	:	More than 200W + 200W in 8 ohms, Dual mono
Line inputs	:	RCA unbalanced and XLR balanced
Speaker terminals	:	Two pairs of heavy duty gold plated
Signal to noise ratio	:	More than 100dB
Crosstalk	:	Less than -100dB
Distortion	:	Less than 0.006 % at 100W i 8 ohm
Intermodulation	:	Less than 0.01 % (19kHz + 20kHz)
Damping factor	:	More than 1000
Power Supply	:	1000VA dual mono, 90 000uF capacitors
Output stage	:	20 pcs 15A 150W high speed bipolar transistors
Power consumption	:	60W in idle mode switched on
Dimensions/weight	:	12cm x 43cm x 37cm (HxWxD), 25kg

HEGEL H30

Output power	:	More than 1100W mono in 8 ohms.
Line inputs	:	RCA unbalanced and XLR balanced
Speaker terminals	:	Heavy duty gold plated
Signal to noise ratio	:	More than 100dB
Crosstalk	:	Less than -100dB
Distortion	:	Less than 0.003 % at 100W i 8 ohm
Intermodulation	:	Less than 0.01 % (19kHz + 20kHz)
Damping factor	:	More than 1000
Power Supply	:	2000VA dual mono, 320 000uF capacitors
Output stage	:	60 pcs 15A 150W high speed bipolar transistors
Power consumption	:	120W in idle mode switched on / 30 W in low power mode
Dimensions/weight	:	21cm x 43cm x 55cm (HxWxD), 55kg

Pre Amplifiers

HEGEL P20

Remote functions	:	Volume, source and mute
Line inputs	:	4 unbalanced, 1 balanced (XLR), 1 Home Theatre
Line outputs	:	1 unbalanced, 1 balanced (XLR), 1 Recording out
Remote inputs/out	:	
Noise floor	:	Less than -130 dB
Crosstalk	:	Less than -100 dB
Distortion	:	Less than 0.005 %
Intermodulation	:	Less than 0.01 % (19kHz+20kHz)
Dimensions/weight	:	6cm x 43cm x 30cm (HxWxD), 10kg

HEGEL P30

Remote functions	:	Volume, source and mute
Line inputs	:	3 unbalanced, 2 balanced (XLR), 1 Home Theatre
Line outputs	:	2 unbalanced, 1 balanced (XLR)
Remote inputs/out	:	Direct IR in - 3,5mm jack, 12V trigger out - 3,5mm jack
Noise floor	:	Less than -130 dB
Crosstalk	:	Less than -100 dB
Distortion	:	Less than 0.005 %
Intermodulation	:	Less than 0.01 % (19kHz+20kHz)
Dimensions/weight	:	6cm x 43cm x 30cm (HxWxD), 10kg



If you have questions regarding any of the HEGEL products we recommend you contact the nearest HEGEL dealer or distributor. You can find them on www.hegel.com in the "how to buy" section.

Hegel Music System AS - Oslo - Norway